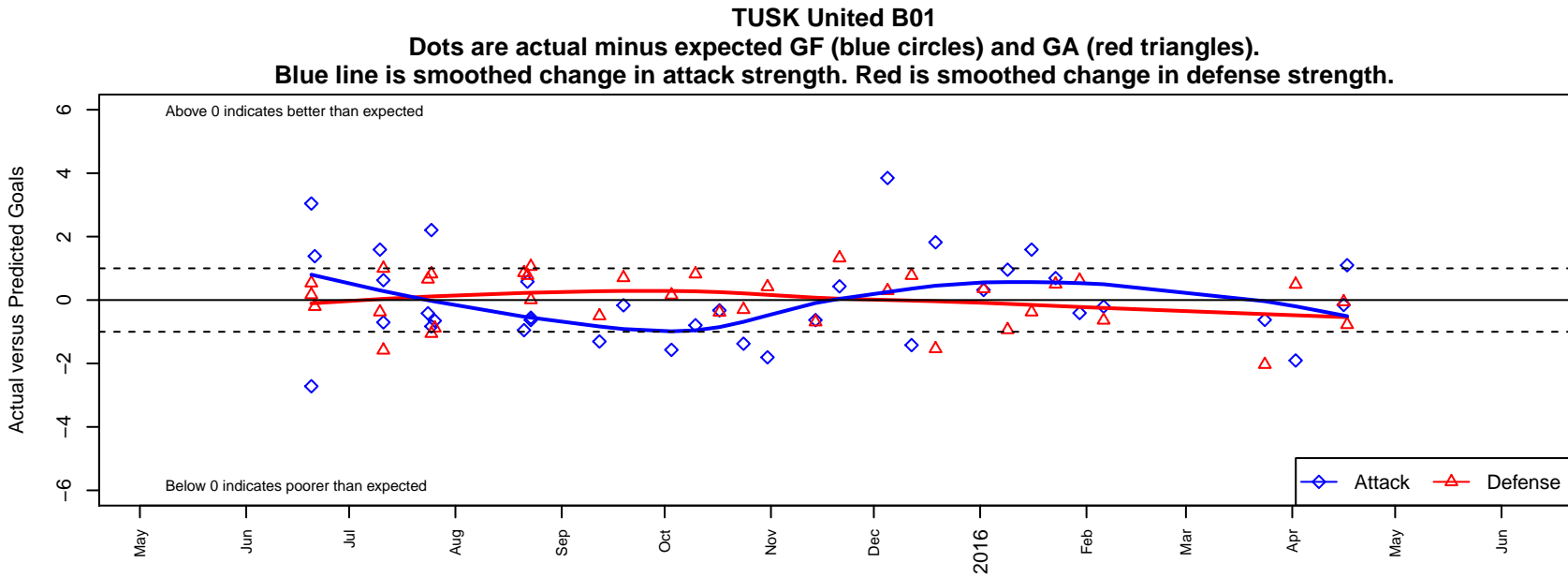


TUSK United B01

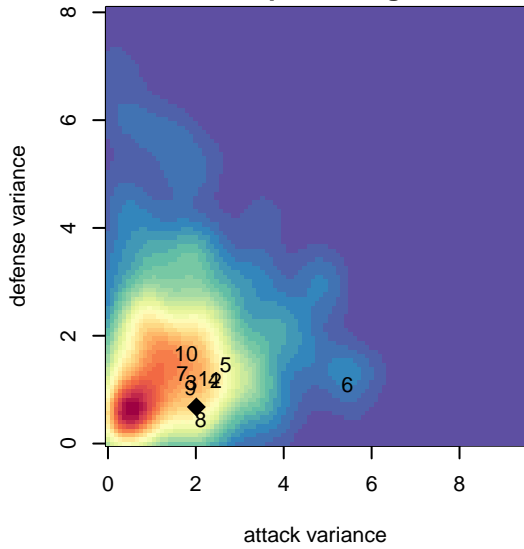
Tukwila Skyway SC
 Tukwila, WA
 B01 total strength=1180
 attack=4.2 defense=3.31
 fall league = NPSL Div 1 U14
 notes= Fox 2014; >2014 Southlake

alt names used:
 TUSK United
 Southlake Select – TUSK United
 Southlake Select B03 TUSK United
 TUSK United
 TUSK UNITED
 Southlake Select – TUSK United

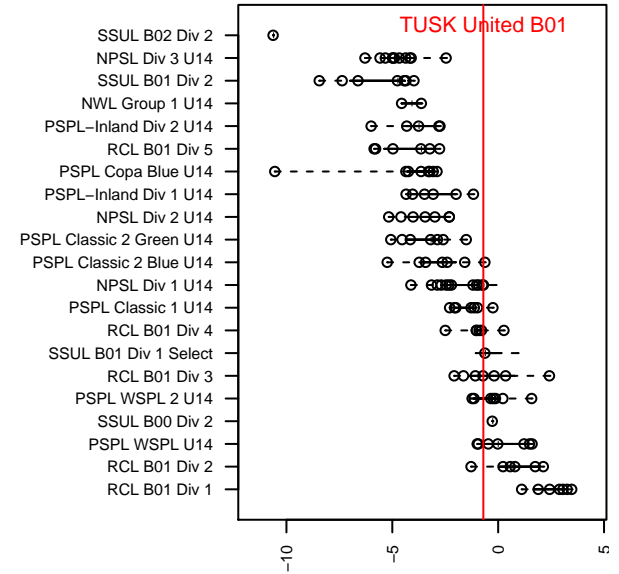
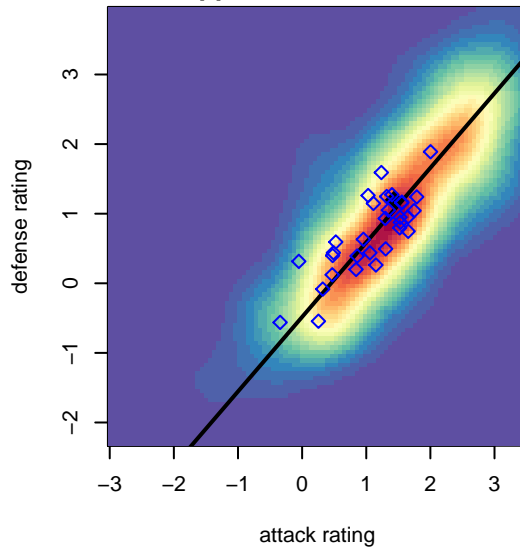
Venues played:
 2015 Snohomish United Invt Group B
 2015 Seattle United Cup BU14
 2015 Crossfire Select BU14 Gold
 2015 Sky River BU14–15
 2015 NPSL Division 1 U14
 2015 Founders Cup B01
 2015 WYS Presidents Cup B01 Division 2



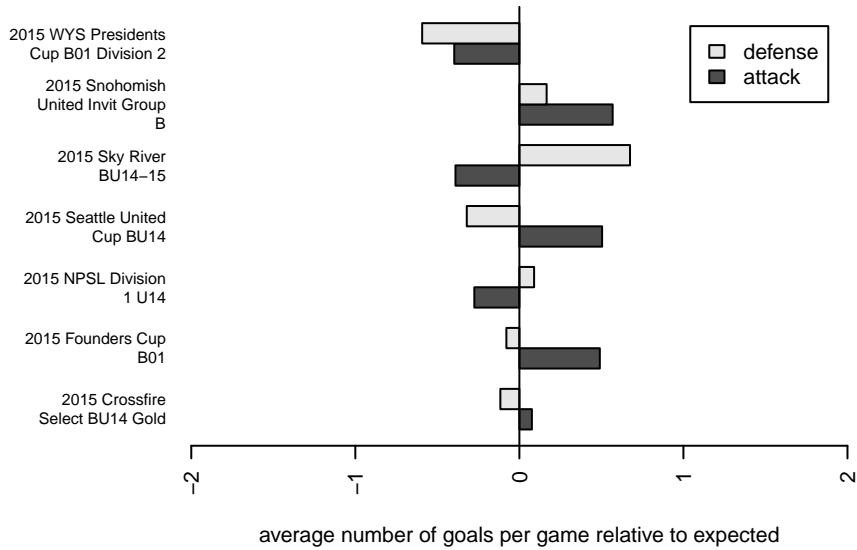
**attack and defense variance (black dot)
relative to other teams
and top 10 in region**



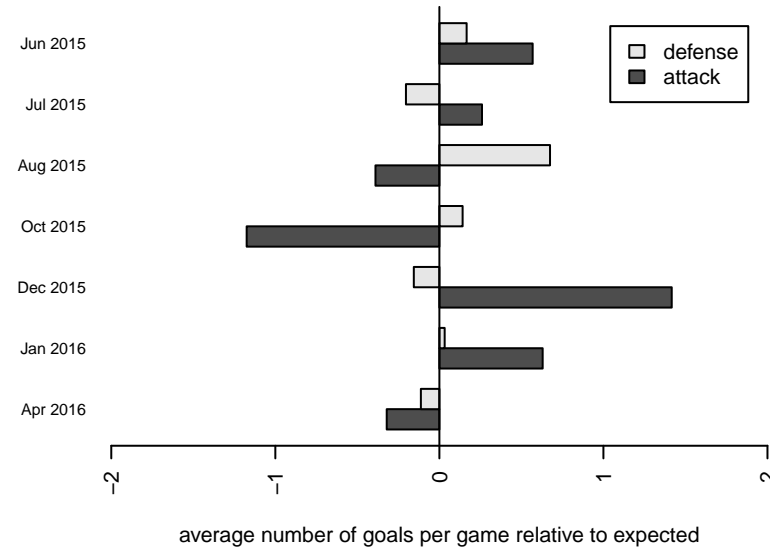
**attack and defense rating
relative to others at age
and all opponents in last 13 months**



Performance relative to 13 month average



Performance relative to 13 month average



date	home		away		venue	pred.home	pred.away
2016-04-17	Blackhills FC Black B01	2	TUSK United B01	3	2015 WYS Presidents Cup B01 Division 2	1.22	1.90
2016-04-16	TUSK United B01	1	Washington Timbers Forest B01	1	2015 WYS Presidents Cup B01 Division 2	1.16	0.94
2016-04-02	TUSK United B01	2	Eastside FC Grey B01	0	2015 WYS Presidents Cup B01 Division 2	3.91	0.49
2016-03-24	PacNW White B01	3	TUSK United B01	1	2015 WYS Presidents Cup B01 Division 2	0.97	1.63
2016-02-06	TUSK United B01	1	Washington Timbers Burgundy B01	2	2015 Founders Cup B01	1.21	1.36
2016-01-30	Seattle United NE Blue B01	0	TUSK United B01	3	2015 Founders Cup B01	0.62	3.41
2016-01-23	TUSK United B01	3	Seattle United S Blue B01	0	2015 Founders Cup B01	2.31	0.50
2016-01-16	Seattle United NE Blue B01	1	TUSK United B01	5	2015 Founders Cup B01	0.62	3.41
2016-01-09	TUSK United B01	2	Tacoma United Pumas B01	2	2015 Founders Cup B01	1.04	1.06
2016-01-02	TUSK United B01	7	IFC Select Red B01	0	2015 Founders Cup B01	6.68	0.35
2015-12-19	Kent United Green B01	3	TUSK United B01	3	2015 NPSL Division 1 U14	1.46	1.18
2015-12-12	NSC Annihilation B01	0	TUSK United B01	0	2015 NPSL Division 1 U14	0.77	1.42
2015-12-05	TUSK United B01	7	BYSC Select B01	0	2015 NPSL Division 1 U14	3.15	0.29
2015-11-21	TUSK United B01	2	NSC Vortex B01	0	2015 NPSL Division 1 U14	1.57	1.32
2015-11-14	Storm King Blue B01	2	TUSK United B01	1	2015 NPSL Division 1 U14	1.31	1.63
2015-10-31	TUSK United B01	1	Mercer Island FC Heat B01	0	2015 NPSL Division 1 U14	2.81	0.42
2015-10-24	BIFC Blue B01	1	TUSK United B01	1	2015 NPSL Division 1 U14	0.70	2.38
2015-10-17	Crossfire Select Nakamura B01	1	TUSK United B01	2	2015 NPSL Division 1 U14	0.61	2.33
2015-10-10	TUSK United B01	2	Crossfire Select Taylor B01	0	2015 NPSL Division 1 U14	2.79	0.82
2015-10-03	Seattle United W Blue B01	1	TUSK United B01	0	2015 NPSL Division 1 U14	1.16	1.57
2015-09-19	TUSK United B01	3	Seattle United Shoreline Blue B01	0	2015 NPSL Division 1 U14	3.17	0.70
2015-09-12	TUSK United B01	1	Seattle United S Blue B01	1	2015 NPSL Division 1 U14	2.31	0.50
2015-08-23	TUSK United B01	2	Gala FC B00	1	2015 Sky River BU14-15	2.56	1.01
2015-08-23	Whatcom Rangers White -Unk B00	0	TUSK United B01	1	2015 Sky River BU14-15	1.06	1.63
2015-08-22	TUSK United B01	2	NSC Annihilation B01	0	2015 Sky River BU14-15	1.42	0.77
2015-08-21	IFC Select Red B00	0	TUSK United B01	1	2015 Sky River BU14-15	0.86	1.95
2015-07-26	SESC Celtic B01	2	TUSK United B01	1	2015 Crossfire Select BU14 Gold	1.11	1.65
2015-07-25	Nortac Sparta Red B01	2	TUSK United B01	1	2015 Crossfire Select BU14 Gold	0.94	1.83

date	home		away		venue	pred.home	pred.away
2015-07-25	TUSK United B01	5	Crossfire Select Taylor B01	0	2015 Crossfire Select BU14 Gold	2.79	0.82
2015-07-24	NW United Premier B01	1	TUSK United B01	1	2015 Crossfire Select BU14 Gold	1.66	1.42
2015-07-11	Coquitlam Metro Ford Shakhtar 2002B	1	TUSK United B01	0	2015 Seattle United Cup BU14	2.00	0.70
2015-07-11	Tracyton B01	2	TUSK United B01	5	2015 Seattle United Cup BU14	0.42	4.37
2015-07-10	TUSK United B01	5	Seattle United NE Blue B01	1	2015 Seattle United Cup BU14	3.41	0.62
2015-06-21	TUSK United B01	3	Crossfire Premier C B01	1	2015 Snohomish United Invit Group B	1.62	0.80
2015-06-20	Snohomish United Red B01	0	TUSK United B01	6	2015 Snohomish United Invit Group B	0.54	2.96
2015-06-20	NWN Blue B01	0	TUSK United B01	4	2015 Snohomish United Invit Group B	0.17	6.72